



# SOUND ANCHORS

## ADJ1 and ADJ2 INSTRUCTIONS



**SOUND ANCHORS INC**

**2835 KIRBY CIRCLE N.E. # 110**

**PALM BAY, FLORIDA USA 32905**

**321 724 1237 [info@soundanchors.com](mailto:info@soundanchors.com) [www.soundanchors.com](http://www.soundanchors.com)**

# SOUND ANCHORS ADJ1 and ADJ2

## ADJUSTABLE SPEAKER STANDS

Thank you for choosing Sound Anchor stands for your studio. We believe that you will find them to be a valuable tool that will help you to hear subtle differences more easily and make better recordings. Please take time to carefully read these instructions before assembling your stands and you will be more than satisfied with their performance for many years to come.

### INVENTORY

1. 2 each Stand Bases
2. 2 each Stand Uprights
3. 2 each "R" Stalks With Platforms
4. 4 each 7/16-14 x 1 Flathead Socket Screws
5. 2 each 7/16-14 x 2 1/2 Socket Head Cap Screws
6. 2 each 7/16 Hardened Flat Washers (Black)
7. 8 each Spikes
8. 8 each 3/8-16 Jam Nuts
9. 8 each 3/8 Flat Washers (Silver)
10. 8 each Bluedots.
11. 1 each 3/8 Hex Key
12. 1 each 5/32 Hex Key
13. 1 each 1/4 Hex Key



---

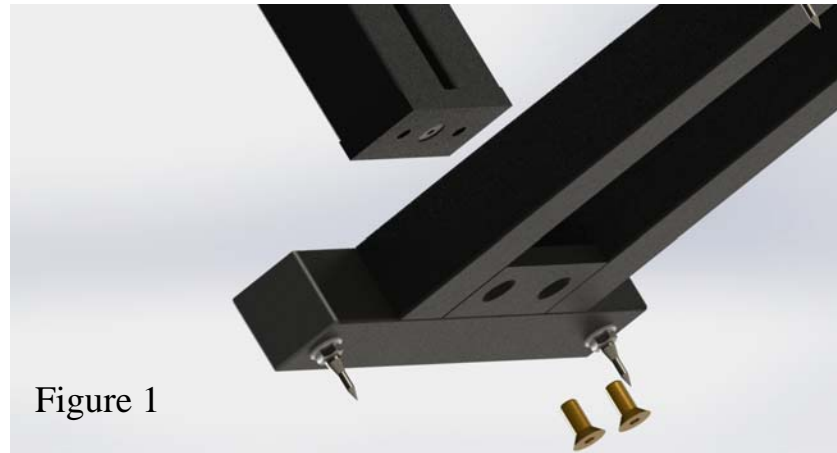
**SOUND ANCHORS INC. 2835 KIRBY CIRCLE #110 PALM BAY, FL. 32905 USA**

**www.soundanchors.com email info@soundanchors.com**

**Ph. 321-724-1237 Fax. 321 914 0953**

## ASSEMBLY

1. Fasten the base to the uprights using 2 ea. 7/16-14 x 1 flathead socket cap screws as shown in figure 1.



2. Install spike washers and jam nuts into the four threaded holes in the stand base as shown in figure 2. Insert the spikes so that there are 1 or 2 spike threads visible after the jam nuts are set. JAM NUTS ARE FINGER TIGHTENED ONLY NO TOOLS.



3. Mount the “R” stalk platform assembly to the stand upright. Use 7/16-14 x 2 1/2 socket head cap screw and 7/16 hardened as shown in figure 3

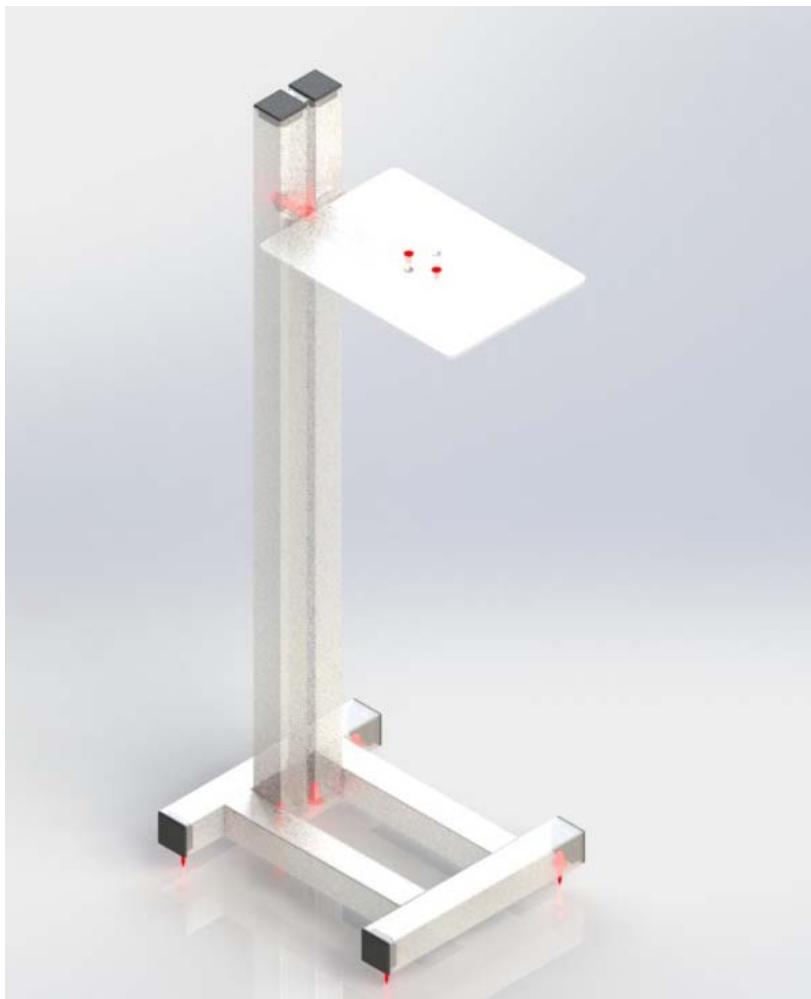


4. After determining the location where you will be setting up your stands it is time to adjust their level. With the stand in it's operational position in the room place a magnetic torpedo level vertically on the front face of the upright. Turn spikes so that the bubble is centered. Repeat procedure on side face of upright. Tighten jam nuts with a 9/16 wrench when the stand is level.

5. Adjust the platform to the desired height and tilt. If you will be adjusting the tilt angle of your speakers it is helpful to use a bubble protractor to ensure that each speaker is set up the same when setting up the platform.

6. Remove the protective coating from both sides of the bluedots. Place one Bluedot on each corner of the platform.

7. Place the speaker on the platform so that the front of the speaker extends over the front edge of the platform.



## SET-UP OPTIONS

1. Post behind speaker vertical speaker.

### THE SETUP FOR MAXIMUM OVERHANG



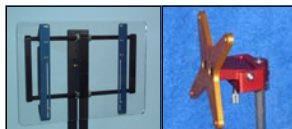
2. Post behind speaker horizontal.



3. Post to side of speaker.

### ADJUSTABLE HEIGHT AND TILT





# SOUND ANCHOR



## STUDIO SOLUTIONS made in USA

### ADJUSTABLE MONITOR STANDS

Adjustable height and tilt. Designed to support near field monitors above the meter bridge. Support your monitors properly and improve performance. The best near field solution for your studio.



### LARGE ADJUSTABLE MONITOR STANDS

These adjustable stands allow low height and tilt adjustment for your midfield or main monitors. Custom made to support any large speaker. Support your large studio monitors where they sound best.



### MOTORIZED ADJUSTABLE MONITOR STANDS

Motorized remote controlled adjustable height speaker stands that can be adjusted from the engineer's chair. Designed so that you can hide your near field monitors when



### DIGITAL AUDIO WORKSTATION STAND

Heavy duty Remote DAW Workstation stand models for single or dual monitors and keyboard. Ideal for digital editing or computer based recording systems.

### ADJUSTABLE LCD STAND

Solid stable adjustable stand for mounting your VESA compliant LCD computer monitor in free space. This stand will support monitors up to 30".



### ADJUSTABLE PLASMA LCD STAND

Large adjustable stands designed to support large flat screen monitors in free space. Redmount large monitor mount. 3 different base sizes, 3 different heights available.



**SOUND ANCHORS INC**

**2835 KIRBY CIRCLE**

**PALM BAY, FL. 32905**